

Pamela J. Marshall

---

# *Jazz-Inflected Etudes*

trumpet  
or other treble-clef instrument

---

PREVIEW

The logo for Spindrift Music Company features a teal wave-like shape above the company name. Below the name is the website address and a tagline.

Spindrift Music Company

[www.spindrift.com](http://www.spindrift.com)

*Publishing contemporary classical music  
and promoting its performance and  
appreciation*

# Jazz-Inflected Etudes

for trumpet or other treble-clef instrument

by Pamela J. Marshall

1. **Hearth**
2. **Skyscape**
3. **I Mourn**

dedicated to Natalo Paella

## Notes

Jazz-Inflected Etudes developed from an evening of improvising at the synthesizer. I wrote the music with the elegant jazz phrasings of my friend Natalo Paella in my ear. These pieces are dedicated to Nat.

Jazz-inflected means that the performers should interpret the pieces in a jazz style; the nuances, tone color, tone-bending, and ornaments are left up to the performer. Some slurs and dynamics are indicated. The performer should feel free to add slurs and dynamics according to their feeling about the music, choosing what sounds most expressive for them. Nuances such as accents, staccato, legato, pitch bending, turns, grace notes, tonguing, mutes or other tone colors may be freely chosen by the performer. Be expressive—play with the tempo, the ornaments, and everything else.

Nat and I decided that *Hearth* sounded good on flugelhorn; and for *I Mourn*, he used a cornet and a plunger to great effect. Nat's performances have taught me a lot of nuances and tone colors that I can apply when I play these pieces. Don't be afraid to exaggerate. What seems extreme to a classically trained player may be just right in a jazz solo.

These etudes can be played in any transposition and by any treble clef instrument, with adjustments for range. For example, when I play "*Hearth*" on the horn, I play the first two high Ds down an octave and I play an A for the third longer D. Other horn players might choose to go for the high notes as written.

About the order: they are printed to provide the best page turns. I think the order *Hearth*, *Skyscape*, *I Mourn* works well, but feel free to do one, two, or all the pieces in an order that suits your interpretation.

***Pamela J. Marshall***  
***December 1999***

Spindrift Music Company  
38 Dexter Road  
Lexington, MA 02420-3304  
781-862-0884

On the Web at <http://www.spindrift.com>

# Hearth

jazz-inflected solo

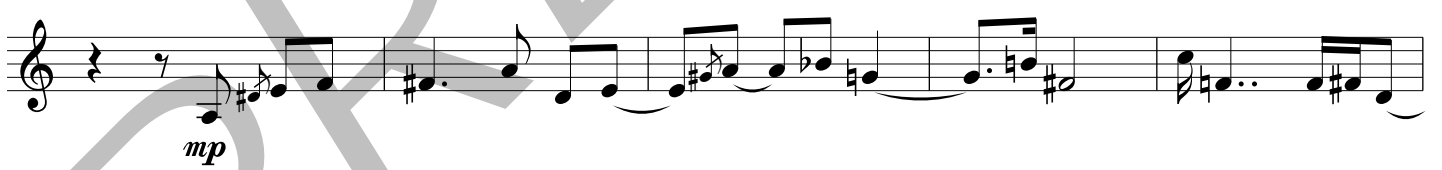
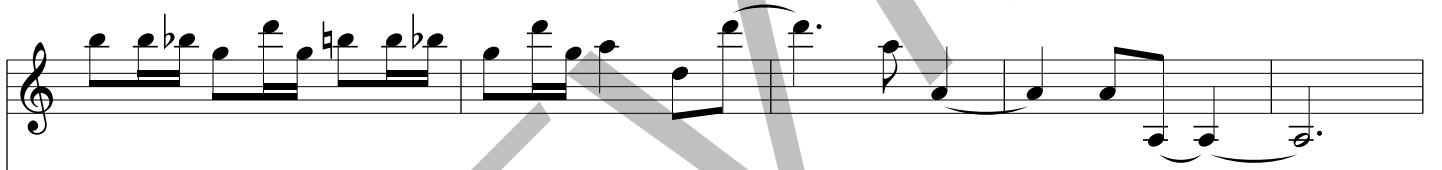
Pamela J. Marshall

Moderate tempo, with warmth ♩ = 84

The musical score for "Hearth" is written in 3/4 time and consists of eight staves of music. The tempo is moderate, with a quarter note equal to 84 beats per minute. The piece begins with a mezzo-piano (*mp*) dynamic. The first staff contains the initial melody, marked with a mezzo-piano (*mp*) dynamic. The second staff continues the melody with various rhythmic patterns. The third staff features a triplet of eighth notes. The fourth staff includes a triplet of eighth notes and a triplet of sixteenth notes. The fifth staff has a fortissimo (*f*) dynamic marking and a pianissimo (*pp*) dynamic marking. The sixth staff features a triplet of eighth notes. The seventh staff continues the melody. The eighth staff concludes the piece with a mezzo-forte (*mf*) dynamic marking.



\*ossia for fluegelhorn and other lower instruments



# I Mourn

jazz-inflected solo

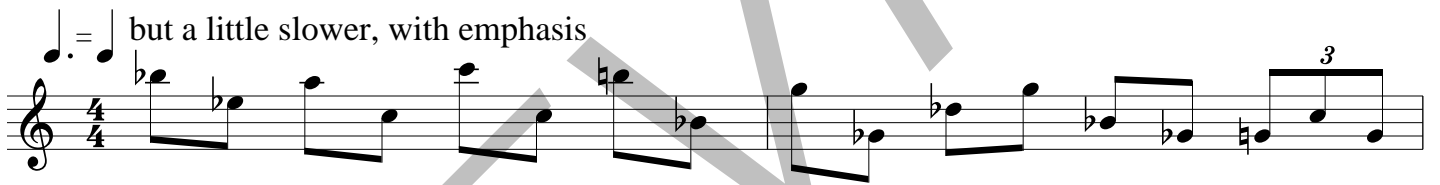
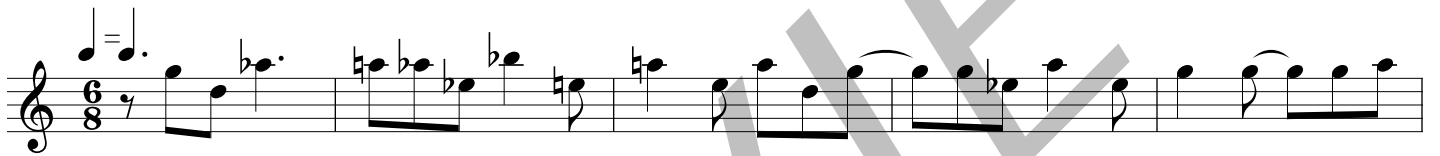
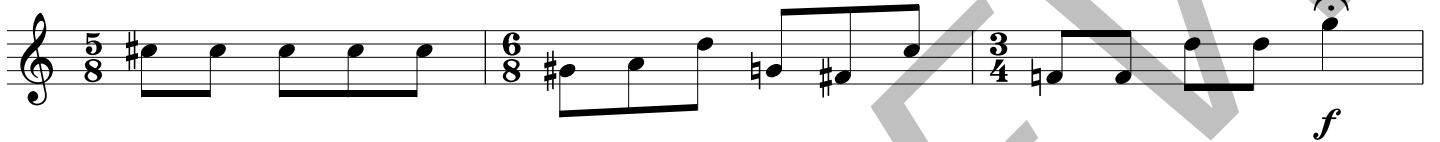
Pamela J. Marshall

Introspectively ♩ = 66

The first section of the piece is marked 'Introspectively' with a tempo of 66 beats per minute. It begins in 4/4 time with a treble clef. The melody starts with a quarter rest, followed by a quarter note G4, an eighth note A4, a quarter note Bb4, and a quarter note C5. This is followed by a quarter note Bb4, an eighth note A4, a quarter note G4, and a quarter note F4. The next measure contains a quarter rest, a quarter note E4, and a quarter note D4. The final measure of this line has a quarter note C4, a quarter note Bb3, and a quarter note A3. The second line of music starts with a quarter note G4, an eighth note A4, a quarter note Bb4, and a quarter note C5. This is followed by a quarter note Bb4, an eighth note A4, a quarter note G4, and a quarter note F4. The next measure contains a quarter note E4, a quarter note D4, and a quarter note C4. The final measure of this line has a quarter note Bb3, a quarter note A3, and a quarter note G3. A triplet of eighth notes (G4, A4, Bb4) is marked above the first three notes of the second line.

Faster, with feeling ♩ = 72

The second section of the piece is marked 'Faster, with feeling' with a tempo of 72 beats per minute. It begins in 4/4 time with a treble clef. The melody starts with a quarter note Bb4, an eighth note A4, a quarter note G4, and a quarter note F4. This is followed by a quarter note E4, a quarter note D4, and a quarter note C4. The next measure contains a quarter note Bb3, a quarter note A3, and a quarter note G3. The final measure of this line has a quarter note F3, a quarter note E3, and a quarter note D3. The second line of music starts with a quarter note C4, a quarter note Bb3, and a quarter note A3. This is followed by a quarter note G3, a quarter note F3, and a quarter note E3. The next measure contains a quarter note D3, a quarter note C3, and a quarter note Bb2. The final measure of this line has a quarter note A2, a quarter note G2, and a quarter note F2. The third line of music starts with a quarter note E3, a quarter note D3, and a quarter note C3. This is followed by a quarter note Bb2, a quarter note A2, and a quarter note G2. The next measure contains a quarter note F2, a quarter note E2, and a quarter note D2. The final measure of this line has a quarter note C2, a quarter note Bb1, and a quarter note A1. The fourth line of music starts with a quarter note G2, a quarter note F2, and a quarter note E2. This is followed by a quarter note D2, a quarter note C2, and a quarter note Bb1. The next measure contains a quarter note A1, a quarter note G1, and a quarter note F1. The final measure of this line has a quarter note E1, a quarter note D1, and a quarter note C1. The fifth line of music starts with a quarter note Bb1, a quarter note A1, and a quarter note G1. This is followed by a quarter note F1, a quarter note E1, and a quarter note D1. The next measure contains a quarter note C1, a quarter note Bb0, and a quarter note A0. The final measure of this line has a quarter note G0, a quarter note F0, and a quarter note E0. The sixth line of music starts with a quarter note D1, a quarter note C1, and a quarter note Bb0. This is followed by a quarter note A0, a quarter note G0, and a quarter note F0. The next measure contains a quarter note E0, a quarter note D0, and a quarter note C0. The final measure of this line has a quarter note Bb0, a quarter note A0, and a quarter note G0. The seventh line of music starts with a quarter note G0, a quarter note F0, and a quarter note E0. This is followed by a quarter note D0, a quarter note C0, and a quarter note Bb0. The next measure contains a quarter note A0, a quarter note G0, and a quarter note F0. The final measure of this line has a quarter note E0, a quarter note D0, and a quarter note C0. The eighth line of music starts with a quarter note Bb0, a quarter note A0, and a quarter note G0. This is followed by a quarter note F0, a quarter note E0, and a quarter note D0. The next measure contains a quarter note C0, a quarter note Bb0, and a quarter note A0. The final measure of this line has a quarter note G0, a quarter note F0, and a quarter note E0. The piece concludes with a quarter rest.



# Skyscape

jazz-inflected solo

Pamela J. Marshall

Relaxed ♩ = 80

Musical score for "Skyscape" by Pamela J. Marshall. The score is written in 4/4 time and consists of ten staves of music. It features a variety of rhythmic patterns, including eighth and sixteenth notes, and rests. The key signature has one flat (B-flat). The tempo is marked "Relaxed" with a quarter note equal to 80 beats per minute. The score includes dynamic markings such as "mp" (mezzo-piano) and articulation like slurs and accents. A large, semi-transparent watermark reading "PREVIEW" is overlaid diagonally across the center of the page.